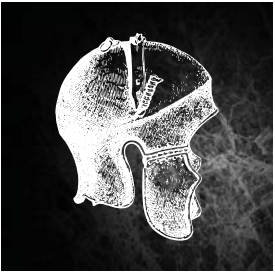


DOMUS



# VESIA

— *Five bedroom home*



Vesia comprises a copious kitchen and sunspace hall which floods the area with natural light. There are two en-suites and a wonderfully spacious master bedroom with dressing area and balcony. The property also benefits from solar collectors, photovoltaic system, cycle store and workshop over garage to selected homes.



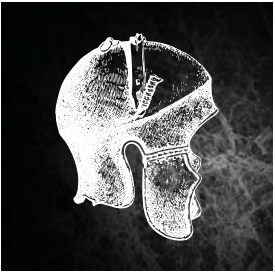
[www.dwh.co.uk](http://www.dwh.co.uk)

*Where quality lives*



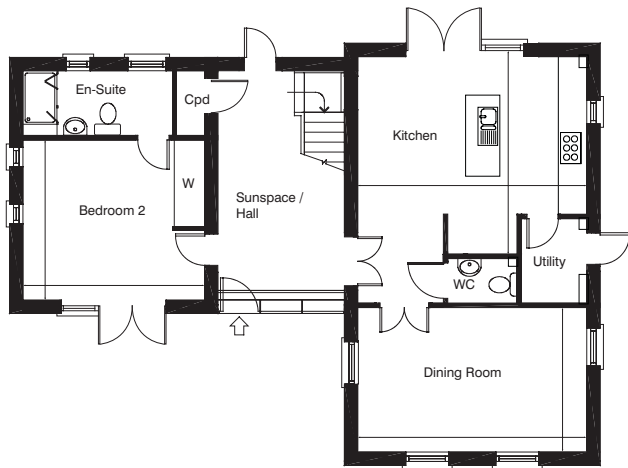
**David Wilson Homes**

DOMUS



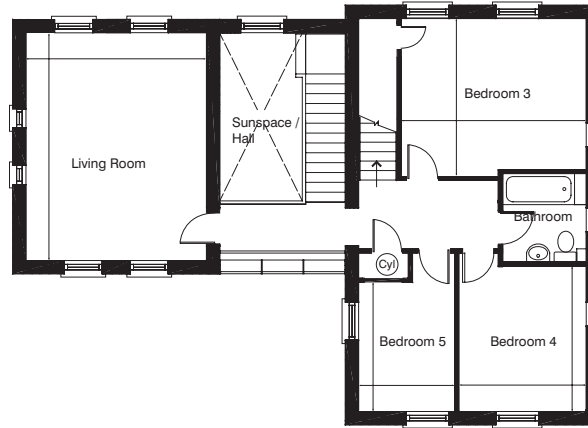
# VESIA

— *Five bedroom home*



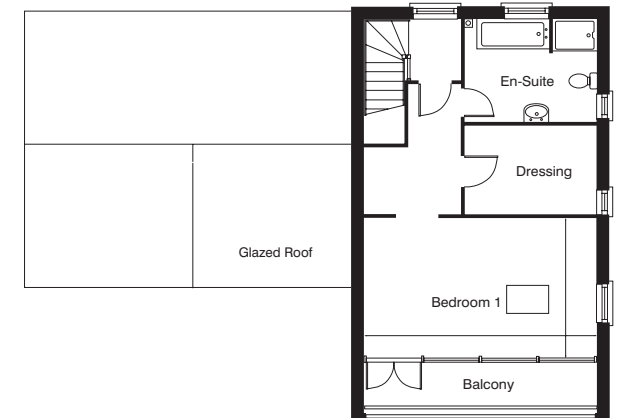
## Ground Floor

Kitchen	5411 x 4633mm	17'7" x 15'2"
Dining	5411 x 3430mm	17'7" x 11'3"
Bedroom 2	4286 x 3767mm	14'0" x 12'4"



## First Floor

Living Room	4286 x 5411mm	14'0" x 17'7"
Bedroom 3	4413 x 3507mm	14'5" x 11'5"
Bedroom 4	3033 x 3765mm	10'0" x 12'4"
Bedroom 5/Office	2285 x 3765mm	7'5" x 12'4"



## Second Floor

Bedroom 1	5411 x 3405mm	17'7" x 11'2"
-----------	---------------	---------------



IMPORTANT INFORMATION The company reserves the right to change the floor layouts at any time. The computer generated image, photography and floor plans are indicative only to give a general indication of the proposed development and floor layout. The dimensions are accurate to within + or - 50mm. The exterior finishes may vary. Note: Dimensions should not be used for carpet sizes, appliance spaces or items of furniture. Please check with your sales consultant for further information. Images are typical of David Wilson Homes. 11/09.