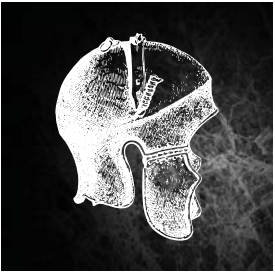


DOMUS



MITHRAS

— *Four bedroom detached home*



Mithras offers an open plan kitchen / dining / family room with French doors leading to the garden as well as four good sized bedrooms, two with en-suites. The property also benefits from solar collectors, cycle store and a sunspace.



www.dwh.co.uk

Where quality lives



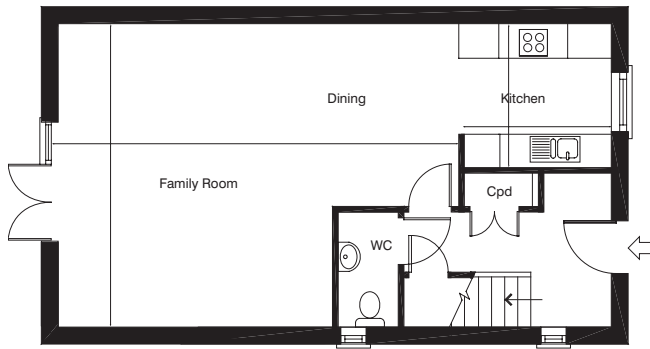
David Wilson Homes

DOMUS



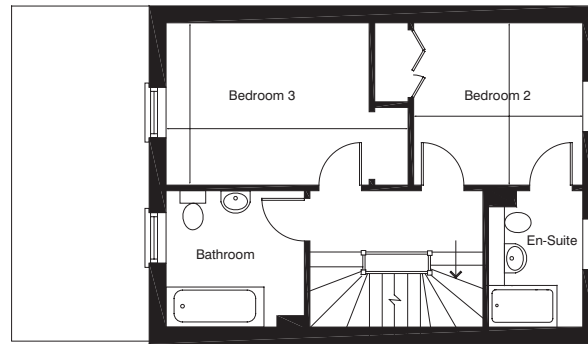
MITHRAS

— Four bedroom detached home



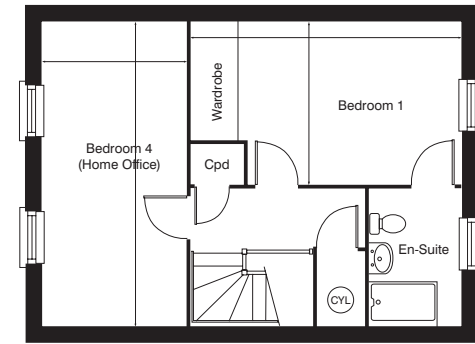
Ground Floor

Family/Dining Room	5411 x 7183mm	17'7" x 23'6"
Kitchen	2720 x 2635mm	8'9" x 8'6"



First Floor

Bedroom 2	2883 x 3025mm	9'5" x 9'9"
Bedroom 3	2883 x 4318mm	9'5" x 14'2"



Second Floor

Bedroom 1	2883 x 4804mm	9'5" x 15'8"
Bedroom 4/Office	5411 x 2539mm	17'7" x 8'3"



IMPORTANT INFORMATION The company reserves the right to change the floor layouts at any time. The computer generated image, photography and floor plans are indicative only to give a general indication of the proposed development and floor layout. The dimensions are accurate to within + or - 50mm. The exterior finishes may vary. Note: Dimensions should not be used for carpet sizes, appliance spaces or items of furniture. Please check with your sales consultant for further information. Images are typical of David Wilson Homes. 11/09.