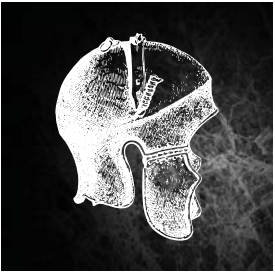


DOMUS



BACCHUS

— *Four bedroom home*



Bacchus boasts an extensive green roof*, a spacious kitchen / family room and a capacious living room as well as a dining room and two en-suites. The property also benefits from having a cycle store.

* selected plots only



www.dwh.co.uk

Where quality lives



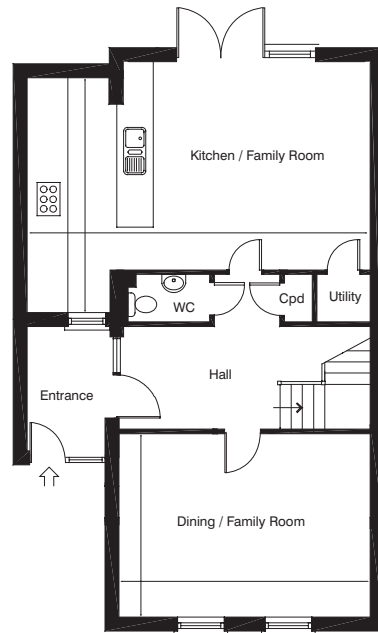
David Wilson Homes

DOMUS



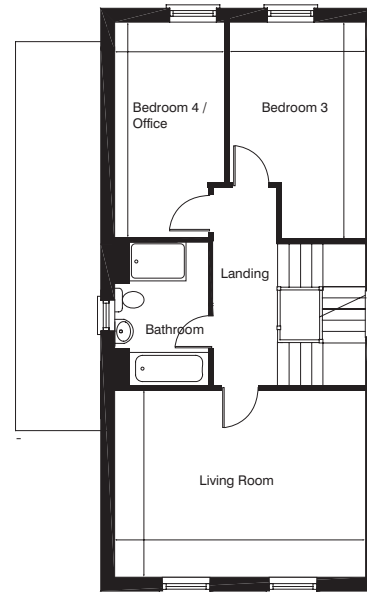
BACCHUS

— *Four bedroom home*



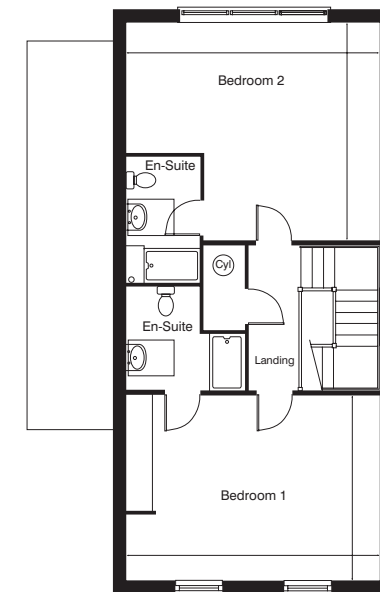
Ground Floor

Kitchen/Family Room	7440 x 5074mm	24'4" x 16'6"
Dining/Family Room	5411 x 3974mm	17'7" x 13'0"



First Floor

Living Room	5411 x 3974mm	17'7" x 13'0"
Bedroom 3	2907 x 4694mm	9'5" x 15'4"
Bedroom 4/Office	2413 x 4716mm	7'9" x 15'4"



Second Floor

Bedroom 1	5411 x 3974mm	17'7" x 13'0"
Bedroom 2	5411 x 4694mm	17'7" x 15'4"

Double switched socket outlet
 Fused spur
 Telephone outlet
 TV aerial socket
 Ceiling lighting

IMPORTANT INFORMATION The company reserves the right to change the floor layouts at any time. The computer generated image, photography and floor plans are indicative only to give a general indication of the proposed development and floor layout. The dimensions are accurate to within + or - 50mm. The exterior finishes may vary. Note: Dimensions should not be used for carpet sizes, appliance spaces or items of furniture. Please check with your sales consultant for further information. Images are typical of David Wilson Homes. 11/09.